

測試報告

Test Report

號碼(No.) : CY/2016/80353

日期(Date) : 2016/08/23

頁數(Page) : 1 of 4

宇祥網版塗料股份有限公司

YU HSING SCREEN & PAINT CO., LTD.

台中市豐原區圓環東路270號

NO. 270, YUAN HUAN E. RD., FENG YUAN DIST., TAIWAN, R. O. C.



以下測試樣品係由申請廠商所提供及確認 (The following sample(s) was/were submitted and identified by/on behalf of the applicant as) :

送樣廠商(Sample Submitted By) : 宇祥網版塗料股份有限公司 (YU HSING SCREEN & PAINT CO., LTD.)

樣品名稱(Sample Description) :

- A-88型 透明油墨 \ A-88 Transparent Ink
- A-88型 特白油墨 \ A-88 White Ink
- A-88型 特黑油墨 \ A-88 Black Ink
- A-88型 桔紅油墨 \ A-88 Super Orange Ink
- A-88型 清紅油墨 \ A-88 Bright Red Ink
- A-88型 金紅油墨 \ A-88 Gold Red Ink
- A-88型 洋紅油墨 \ A-88 Magenta Ink
- A-88型 玫瑰紅油墨 \ A-88 Rose Red Ink
- A-88型 紫紅油墨 \ A-88 Purple Red Ink
- A-88型 紫藍油墨 \ A-88 Violet Ink
- A-88型 特藍油墨 \ A-88 Permanent Blue Ink
- A-88型 群藍油墨 \ A-88 Brilliant Blue Ink
- A-88型 特綠油墨 \ A-88 Permanent Green Ink
- A-88型 中黃油墨 \ A-88 Golden Yellow Ink
- A-88型 檸檬黃油墨 \ A-88 Lemon Yellow Ink
- A-88型 四原黑油墨 \ A-88 Black Tix Ink
- A-88型 四原黃油墨 \ A-88 Yellow Tix Ink
- A-88型 四原藍油墨 \ A-88 Cyan Tix Ink
- A-88型 四原紅油墨 \ A-88 Magenta Tix Ink

收件日期(Sample Receiving Date) : 2016/08/15

測試期間(Testing Period) : 2016/08/15 TO 2016/08/23

測試需求(Test Requested) : 依據客戶指定, 檢測重金屬特定遷移量及溶出有機錫. / As specified by client, to test Migration of heavy metals and Soluble Organic Tin in the submitted sample.

測試結果(Test Results) 請見下一頁 (Please refer to next pages).

Troy Chang, Manager - Tech
Signed for and on behalf of
SGS TAIWAN LTD.
Chemical Laboratory - Taipei



This document is issued by the Company subject to its General Conditions of Service printed overleaf, available on request or accessible at <http://www.sgs.com/en/Terms-and-Conditions.aspx> and, for electronic format documents, subject to Terms and Conditions for Electronic Documents at <http://www.sgs.com/en/Terms-and-Conditions/Termse-Documents.aspx>. Attention is drawn to the limitation of liability, indemnification and jurisdiction issues defined therein. Any holder of this document is advised that information contained hereon reflects the Company's findings at the time of its intervention only and within the limits of client's instruction, if any. The Company's sole responsibility is to its Client and this document does not exonerate parties to a transaction from exercising all their rights and obligations under the transaction documents. This document cannot be reproduced, except in full, without prior written approval of the Company. Any unauthorized alteration, forgery or falsification of the content or appearance of this document is unlawful and offenders may be prosecuted to the fullest extent of the law. Unless otherwise stated the results shown in this test report refer only to the sample(s) tested.

測試報告

Test Report

號碼(No.) : CY/2016/80353

日期(Date) : 2016/08/23

頁數(Page) : 2 of 4

宇祥網版塗料股份有限公司

YU HSING SCREEN & PAINT CO., LTD.

台中市豐原區圓環東路270號

NO. 270, YUAN HUAN E. RD., FENG YUAN DIST., TAIWAN, R. O. C.



測試結果(Test Results)

測試部位(PART NAME) No. 1 : 黑色油墨 (客戶自行調配之樣品) (乾基) (BLACK INK (SAMPLE IS BLENDED BY CLIENT)(DRY BASE))

測試項目 (Test Items)	單位 (Unit)	測試方法 (Method)	MDL	結果 (Result)
				No. 1
溶出鋁 / Soluble Aluminum (Al)	mg/kg	參考 EN 71 Part 3:2013, 以感應耦合電漿原子發射光譜儀檢測. / With reference to EN 71 Part 3:2013. Analysis was performed by ICP-AES.	50	n. d.
溶出銻 / Soluble Antimony (Sb)	mg/kg		10	n. d.
溶出砷 / Soluble Arsenic (As)	mg/kg		10	n. d.
溶出鋇 / Soluble Barium (Ba)	mg/kg		50	n. d.
溶出硼 / Soluble Boron (B)	mg/kg		50	n. d.
溶出鎘 / Soluble Cadmium (Cd)	mg/kg		5	n. d.
溶出鈷 / Soluble Cobalt (Co)	mg/kg		10	n. d.
溶出銅 / Soluble Copper (Cu)	mg/kg		50	n. d.
溶出鉛 / Soluble Lead (Pb)	mg/kg		10	n. d.
溶出錳 / Soluble Manganese (Mn)	mg/kg		50	n. d.
溶出汞 / Soluble Mercury (Hg)	mg/kg		10	n. d.
溶出鎳 / Soluble Nickel (Ni)	mg/kg		10	n. d.
溶出硒 / Soluble Selenium (Se)	mg/kg		10	n. d.
溶出銦 / Soluble Strontium (Sr)	mg/kg		50	n. d.
溶出錫 / Soluble Tin (Sn)	mg/kg		4.9	n. d.
溶出鋅 / Soluble Zinc (Zn)	mg/kg		50	n. d.
溶出鉻 / Soluble Chromium (Cr)	mg/kg	參考 EN 71 Part 3:2013, 以液相層析感應耦合電漿質譜儀檢測. / With reference to EN 71 Part 3:2013. Analysis was performed by LC-ICP-MS.	5	n. d.
溶出三價鉻 / Soluble Chromium (III) (Cr (III))	mg/kg		0.18	n. d.
溶出六價鉻 / Soluble Chromium (VI) (Cr (VI))	mg/kg			

測試報告

Test Report

號碼(No.) : CY/2016/80353

日期(Date) : 2016/08/23

頁數(Page) : 3 of 4

宇祥網版塗料股份有限公司

YU HSING SCREEN & PAINT CO., LTD.

台中市豐原區圓環東路270號

NO. 270, YUAN HUAN E. RD., FENG YUAN DIST., TAIWAN, R. O. C.



測試項目 (Test Items)	單位 (Unit)	測試方法 (Method)	MDL	結果 (Result)
				No. 1
甲基錫 / Methyl tin (MeT)	mg/kg	參考 EN 71 Part 3:2013, 以氣相層析/質譜儀檢測. / With reference to EN 71 Part 3:2013. Analysis was performed by GC/MS.	0.5	n. d.
二丙基錫 / Di-n-propyl tin (DProT)	mg/kg		0.5	n. d.
單丁基錫 / Butyl tin (BuT)	mg/kg		0.5	n. d.
二丁基錫 / Dibutyl Tin (DBT)	mg/kg		0.5	n. d.
三丁基錫 / Tributyl Tin (TBT)	mg/kg		0.5	n. d.
單辛基錫 / n-Octyl tin (MOT)	mg/kg		0.5	n. d.
四丁基錫 / Tetrabutyltin (TeBT)	mg/kg		0.5	n. d.
二苯基錫 / Diphenyltin (DphT)	mg/kg		0.5	n. d.
二辛基錫 / Di-n-octyl tin (DOT)	mg/kg		0.5	n. d.
三苯基錫 / Triphenyl Tin (TphT)	mg/kg		0.5	n. d.
溶出有機錫 / Soluble Organic Tin	mg/kg		-	n. d.

備註(Note) :

1. mg/kg = ppm ; 0.1wt% = 1000ppm
2. MDL = Method Detection Limit (方法偵測極限值)
3. n.d. = Not Detected = below MDL (未檢出 / 低於MDL)
4. "-" = Not Regulated (無規格值)
5. 樣品在乾燥至恆定重量後測試. / The sample(s) was/were tested after drying to consistent weight.

測試報告

Test Report

號碼(No.) : CY/2016/80353

日期(Date) : 2016/08/23

頁數(Page) : 4 of 4

宇祥網版塗料股份有限公司

YU HSING SCREEN & PAINT CO., LTD.

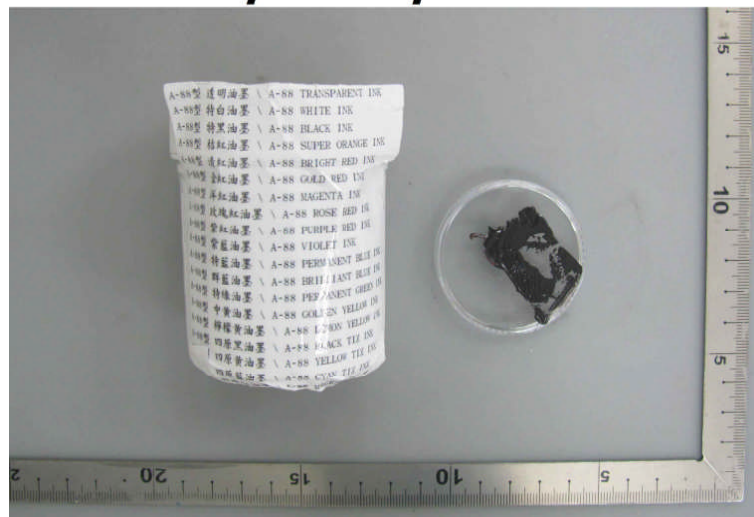
台中市豐原區圓環東路270號

NO. 270, YUAN HUAN E. RD., FENG YUAN DIST., TAIWAN, R. O. C.



* 照片中如有箭頭標示，則表示為實際檢測之樣品/部位。*
(The tested sample / part is marked by an arrow if it's shown on the photo.)

CY/2016/80353



** 報告結尾(End of Report) **

This document is issued by the Company subject to its General Conditions of Service printed overleaf, available on request or accessible at <http://www.sgs.com/en/Terms-and-Conditions.aspx> and, for electronic format documents, subject to Terms and Conditions for Electronic Documents at <http://www.sgs.com/en/Terms-and-Conditions/Termse-Document.aspx>. Attention is drawn to the limitation of liability, indemnification and jurisdiction issues defined therein. Any holder of this document is advised that information contained hereon reflects the Company's findings at the time of its intervention only and within the limits of client's instruction, if any. The Company's sole responsibility is to its Client and this document does not exonerate parties to a transaction from exercising all their rights and obligations under the transaction documents. This document cannot be reproduced, except in full, without prior written approval of the Company. Any unauthorized alteration, forgery or falsification of the content or appearance of this document is unlawful and offenders may be prosecuted to the fullest extent of the law. Unless otherwise stated the results shown in this test report refer only to the sample(s) tested.